



**BEYOND FLUID**

Beyond Fluid

**Stainless Steel Weld Fittings**

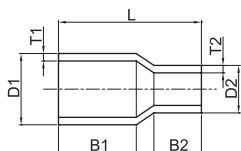


**E-mail: [sales@beyondfluid.com](mailto:sales@beyondfluid.com)**

**Web: [www.beyondfluid.com](http://www.beyondfluid.com)**

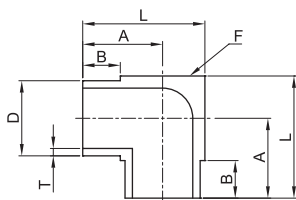
# Micro Weld Fittings

## Micro Reducer



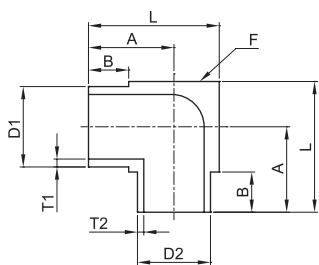
Part No.	Tube OD (D1)		Tube OD (D2)		T1	T2	B1	B2	L
	Size (in)	Size	Size (in)	Size					
SM4X2R6	1/4"	6.35	1/8"	3.18	1.00	0.70	10.40	6.35	19.10
SM6X4R6	3/8"	9.53	1/4"	6.35	1.00	1.00	10.40	6.35	19.10
SM8X4R6	1/2"	12.70	1/4"	6.35	1.24	1.00	10.40	6.35	19.10
SM8X6R6	1/2"	12.70	3/8"	9.53	1.24	1.00	10.40	6.35	19.10
SM12X4R6	3/4"	19.05	1/4"	6.35	1.65	1.00	10.40	6.35	19.10
SM12X6R6	3/4"	19.05	3/8"	9.53	1.65	1.00	10.40	6.35	19.10
SM12X8R6	3/4"	19.05	1/2"	12.70	1.65	1.24	10.40	6.35	19.10

## Micro 90° Elbow



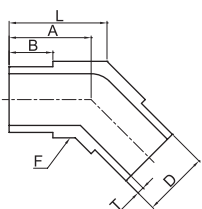
Part No.	Tube OD (D)		T	A	B	F Body	L
	Size (in)	Size					
SM2E6	1/8"	3.18	0.70	10.32	6.35	7.94	14.29
SM4E6	1/4"	6.35	1.00	10.32	6.35	7.94	14.29
SM6E6	3/8"	9.53	1.00	11.91	6.35	11.11	17.46
SM8E6	1/2"	12.70	1.24	13.50	6.35	14.29	20.64
SM12E6	3/4"	19.05	1.65	16.68	6.35	20.65	27.00

## Micro Reducing 90° Elbow



Part No.	Tube OD (D1)		Tube OD (D2)		T1	T2	A	B	F Body	L
	Size (in)	Size	Size (in)	Size						
SM4X2E6	1/4"	6.35	1/8"	3.18	1.00	0.70	10.32	6.35	7.94	14.29
SM6X4E6	3/8"	9.53	1/4"	6.35	1.00	1.00	11.91	6.35	11.11	17.46
SM8X4E6	1/2"	12.70	1/4"	6.35	1.24	1.00	13.50	6.35	14.29	20.64
SM8X6E6	1/2"	12.70	3/8"	9.53	1.24	1.00	13.50	6.35	14.29	20.64
SM12X4E6	3/4"	19.05	1/4"	6.35	1.65	1.00	16.68	6.35	20.65	27.00
SM12X6E6	3/4"	19.05	3/8"	9.53	1.65	1.00	16.68	6.35	20.65	27.00
SM12X8E6	3/4"	19.05	1/2"	12.70	1.65	1.24	16.68	6.35	20.65	27.00

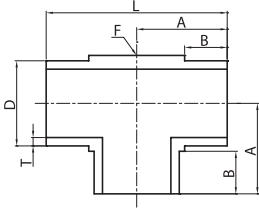
## Micro 45° Elbow



Part No.	Tube OD (D)		T	A	B	F Body	L
	Size (in)	Size					
SM2HE6	1/8"	3.18	0.70	10.32	6.35	7.94	11.96
SM4HE6	1/4"	6.35	1.00	10.32	6.35	7.94	11.96
SM6HE6	3/8"	9.53	1.00	11.91	6.35	11.11	14.21
SM8HE6	1/2"	12.70	1.24	13.50	6.35	14.29	16.46
SM12HE6	3/4"	19.05	1.65	16.68	6.35	20.65	20.95

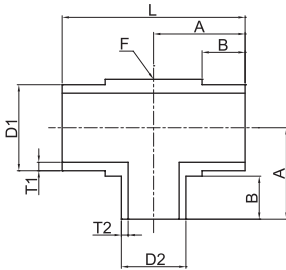
NOTE:  
 ·Dimensions and Drawings are for reference only and are subject to change without prior notice.  
 ·Unless otherwise specified, all dimensions are in millimeters.

Micro Tee



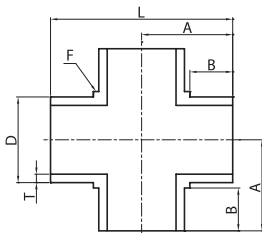
Part No.	Tube OD (D)		T	A	B	F Body	L
	Size (in)	Size					
SM2T6	1/8"	3.18	0.70	10.32	6.35	7.94	20.64
SM4T6	1/4"	6.35	1.00	10.32	6.35	7.94	20.64
SM6T6	3/8"	9.53	1.00	11.91	6.35	11.11	23.81
SM8T6	1/2"	12.70	1.24	13.50	6.35	14.29	26.99
SM12T6	3/4"	19.05	1.65	16.68	6.35	20.65	33.35

Micro Reducing Tee



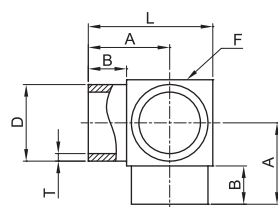
Part No.	Tube OD (D1)		Tube OD (D2)		T1	T2	A	B	F Body	L
	Size (in)	Size	Size (in)	Size						
SM4X2T6	1/4"	6.35	1/8"	3.18	1.00	0.70	10.35	6.35	7.94	20.64
SM6X4T6	3/8"	9.53	1/4"	6.35	1.00	1.00	11.91	6.35	11.11	23.81
SM8X4T6	1/2"	12.70	1/4"	6.35	1.24	1.00	13.50	6.35	14.29	27.00
SM8X6T6	1/2"	12.70	3/8"	9.53	1.24	1.00	13.50	6.35	14.29	27.00
SM12X4T6	3/4"	19.05	1/4"	6.35	1.65	1.00	16.68	6.35	20.65	27.00
SM12X6T6	3/4"	19.05	3/8"	9.53	1.65	1.00	16.68	6.35	20.65	27.00
SM12X8T6	3/4"	19.05	1/2"	12.70	1.65	1.24	16.68	6.35	20.65	27.00

Micro Cross



Part No.	Tube OD (D)		T	A	B	F Body	L
	Size (in)	Size					
SM2CR6	1/8"	3.18	0.70	10.32	6.35	7.94	20.64
SM4CR6	1/4"	6.35	1.00	10.32	6.35	7.94	20.64
SM6CR6	3/8"	9.53	1.00	11.91	6.35	11.11	23.81
SM8CR6	1/2"	12.70	1.24	13.50	6.35	14.29	27.00
SM12CR6	3/4"	19.05	1.65	16.68	6.35	20.65	33.35

Micro Tribow

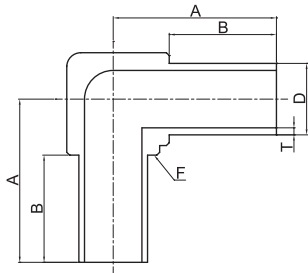


Part No.	Tube OD (D)		T	A	B	F Body	L
	Size (in)	Size					
SM2TB6	1/8"	3.18	0.70	10.32	6.35	7.94	14.29
SM4TB6	1/4"	6.35	1.00	10.32	6.35	7.94	14.29
SM6TB6	3/8"	9.53	1.00	11.91	6.35	11.11	17.46
SM8TB6	1/2"	12.70	1.24	13.50	6.35	14.29	20.64
SM12TB6	3/4"	19.05	1.65	16.68	6.35	20.65	27.00

NOTE:  
 ·Dimensions and Drawings are for reference only and are subject to change without prior notice.  
 ·Unless otherwise specified, all dimensions are in millimeters.

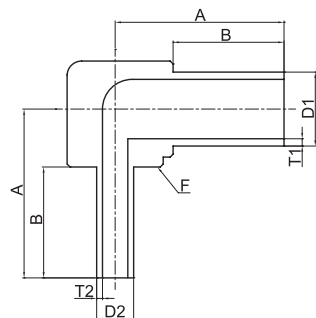
# Forged Weld Fittings

## 90° Elbow



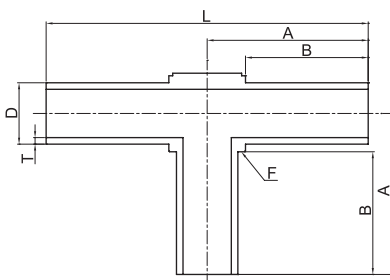
Part No.	Tube OD (D)		T	A	B	F Body
	Size (in)	Size				
SM4E19	1/4"	6.35	1.00	25.00	19.05	11.10
SM6E19	3/8"	9.53	1.00	25.00	19.05	12.40
SM8E19	1/2"	12.70	1.24	29.00	19.05	17.00
SM12E22	3/4"	19.05	1.65	33.50	22.50	25.00
SM16E23	1"	25.40	1.65	38.30	23.30	30.00
SM4E10	1/4"	6.35	1.00	15.90	10.00	11.10
SM6E10	3/8"	9.53	1.00	15.90	10.00	12.40
SM8E10	1/2"	12.70	1.24	19.90	10.00	17.00
SM12E10	3/4"	19.05	1.65	22.40	10.00	25.00
SM16E10	1"	25.40	1.65	24.95	10.00	30.00

## Reducing 90° Elbow



Part No.	Tube OD (D1)		Tube OD (D2)		T1	T2	A	B	F Body
	Size (in)	Size	Size (in)	Size					
SM6X4E19	3/8"	9.53	1/4"	6.35	1.00	1.00	25.00	19.05	12.4
SM8X4E19	1/2"	12.70	1/4"	6.35	1.24	1.00	29.00	19.05	17.0
SM8X6E19	1/2"	12.70	3/8"	9.53	1.24	1.00	29.00	19.05	17.0
SM12X4E22	3/4"	19.05	1/4"	6.35	1.65	1.00	33.50	22.50	25.0
SM12X6E22	3/4"	19.05	3/8"	9.53	1.65	1.00	33.50	22.50	25.0
SM12X8E22	3/4"	19.05	1/2"	12.70	1.65	1.24	33.50	22.50	25.0
SM16X4E23	1"	25.40	1/4"	6.35	1.65	1.00	38.30	23.30	30.0
SM16X8E23	1"	25.40	1/2"	12.70	1.65	1.24	38.30	23.30	30.0
SM16X12E23	1"	25.40	3/4"	19.05	1.65	1.65	38.30	23.30	30.0

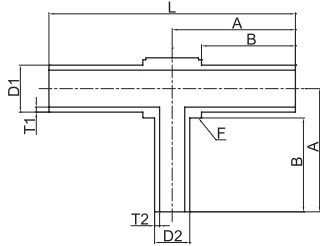
## Tee



Part No.	Tube OD (D)		T	A	B	F Body	L
	Size (in)	Size					
SM4T19	1/4"	6.35	1.00	25.00	19.05	11.1	50.00
SM6T19	3/8"	9.53	1.00	25.00	19.05	12.4	50.00
SM8T19	1/2"	12.70	1.24	29.00	19.05	17.0	58.00
SM12T22	3/4"	19.05	1.65	33.50	22.50	25.0	67.00
SM16T23	1"	25.40	1.65	38.30	23.30	30.0	76.60
SM4T10	1/4"	6.35	1.00	15.90	10.00	11.1	31.80
SM6T10	3/8"	9.53	1.00	15.90	10.00	12.4	31.80
SM8T10	1/2"	12.70	1.24	19.90	10.00	17.0	39.80
SM12T10	3/4"	19.05	1.65	22.40	10.00	25.0	44.80
SM16T10	1"	25.40	1.65	24.95	10.00	30.0	49.90

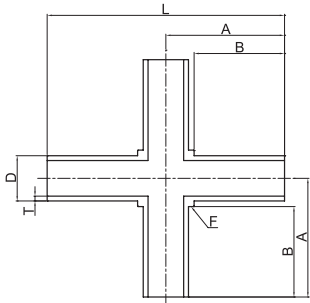
NOTE:  
 ·Dimensions and Drawings are for reference only and are subject to change without prior notice.  
 ·Unless otherwise specified, all dimensions are in millimeters.

Reducing Tee



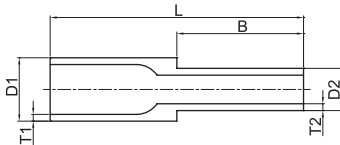
Part No.	Tube OD (D1)		Tube OD (D2)		T1	T2	A	B	F Body	L
	Size (in)	Size	Size (in)	Size						
SM6X4T19	3/8"	9.53	1/4"	6.35	1.00	1.00	25.00	19.05	12.4	50.00
SM8X4T19	1/2"	12.70	1/4"	6.35	1.24	1.00	29.00	19.05	17.0	58.00
SM8X6T19	1/2"	12.70	3/8"	9.53	1.24	1.00	29.00	19.05	17.0	58.00
SM12X4T22	3/4"	19.05	1/4"	6.35	1.65	1.00	33.50	22.50	25.0	67.00
SM12X6T22	3/4"	19.05	3/8"	9.53	1.65	1.00	33.50	22.50	25.0	67.00
SM12X8T22	3/4"	19.05	1/2"	12.70	1.65	1.24	33.50	22.50	25.0	67.00
SM16X4T23	1"	25.40	1/4"	6.35	1.65	1.00	38.30	23.30	30.0	76.60
SM16X8T23	1"	25.40	1/2"	12.70	1.65	1.24	38.30	23.30	30.0	76.60
SM16X12T23	1"	25.40	3/4"	19.05	1.65	1.65	38.30	23.30	30.0	76.60
SM6X4T10	3/8"	9.53	1/4"	6.35	1.00	1.00	15.90	10.00	12.4	31.80
SM8X4T10	1/2"	12.70	1/4"	6.35	1.24	1.00	19.90	10.00	17.0	39.80
SM8X6T10	1/2"	12.70	3/8"	9.53	1.24	1.00	19.90	10.00	17.0	39.80
SM12X4T10	3/4"	19.05	1/4"	6.35	1.65	1.00	22.40	10.00	25.0	44.80
SM12X6T10	3/4"	19.05	3/8"	9.53	1.65	1.00	22.40	10.00	25.0	44.80

Cross



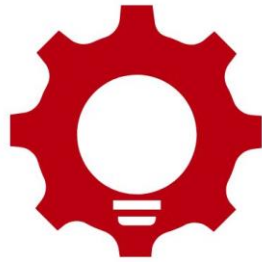
Part No.	Tube OD (D)		T	A	B	F Body	L
	Size (in)	Size					
SM4CR19	1/4"	6.35	1.00	25.00	19.05	11.1	50.00
SM6CR19	3/8"	9.53	1.00	25.00	19.05	12.4	50.00
SM8CR19	1/2"	12.7	1.24	29.00	19.05	17.0	58.00
SM12CR22	3/4"	19.05	1.65	31.50	22.50	25.0	67.00
SM16CR23	1"	25.4	1.65	34.00	23.30	30.0	76.60
SM4CR10	1/4"	6.35	1.00	15.90	10.00	11.1	31.80
SM6CR10	3/8"	9.53	1.00	15.90	10.00	12.4	31.80
SM8CR10	1/2"	12.7	1.24	19.90	10.00	17.0	39.80
SM12CR10	3/4"	19.05	1.65	22.40	10.00	25.0	44.80
SM16CR10	1"	25.4	1.65	24.95	10.00	30.0	49.90

Reducer



Part No.	Tube OD (D1)		Tube OD (D2)		T1	T2	B	L
	Size (in)	Size	Size (in)	Size				
SM6X4R19	3/8"	9.53	1/4"	6.35	1.00	1.00	19.05	38.1
SM8X4R19	1/2"	12.70	1/4"	6.35	1.24	1.00	19.05	38.1
SM8X6R19	1/2"	12.70	3/8"	9.53	1.24	1.00	19.05	38.1
SM12X4R19	3/4"	19.05	1/4"	6.35	1.65	1.00	19.05	42.9
SM12X6R19	3/4"	19.05	3/8"	9.53	1.65	1.00	19.05	42.9
SM12X8R19	3/4"	19.05	1/2"	12.70	1.65	1.24	19.05	42.9
SM16X4R19	1"	25.40	1/4"	6.35	1.65	1.00	19.05	42.9
SM16X6R19	1"	25.40	3/8"	9.53	1.65	1.00	19.05	42.9
SM16X8R19	1"	25.40	1/2"	12.70	1.65	1.24	19.05	42.9
SM16X12R19	1"	25.40	3/4"	19.05	1.65	1.65	19.05	42.9
SM6X4R10	3/8"	9.53	1/4"	6.35	1.00	1.00	10.00	20.0
SM8X4R10	1/2"	12.70	1/4"	6.35	1.24	1.00	10.00	20.0
SM8X6R10	1/2"	12.70	3/8"	9.53	1.24	1.00	10.00	20.0
SM16X4R10	3/4"	19.05	1/4"	6.35	1.65	1.00	10.00	20.0
SM16X6R10	3/4"	19.05	3/8"	9.53	1.65	1.00	10.00	20.0
SM16X8R10	3/4"	19.05	1/2"	12.70	1.65	1.24	10.00	20.0

NOTE:  
 ·Dimensions and Drawings are for reference only and are subject to change without prior notice.  
 ·Unless otherwise specified, all dimensions are in millimeters.



# BEYOND FLUID

---

Beyond Fluid

E-mail: [sales@beyondfluid.com](mailto:sales@beyondfluid.com)

Web: [www.beyondfluid.com](http://www.beyondfluid.com)